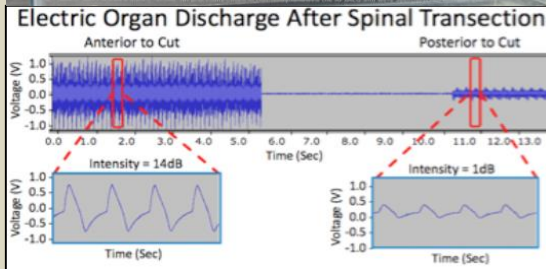
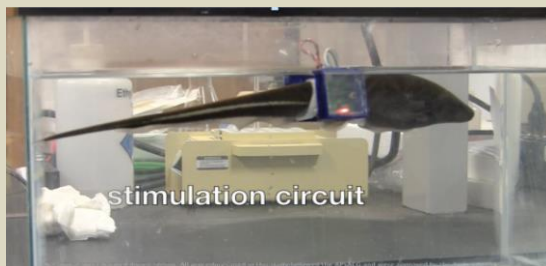
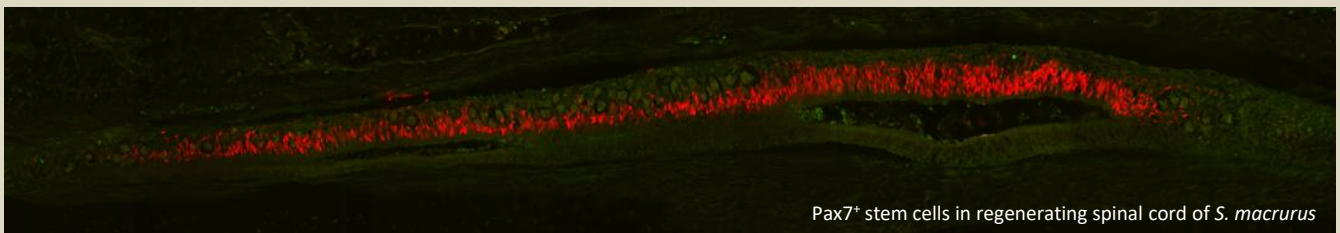
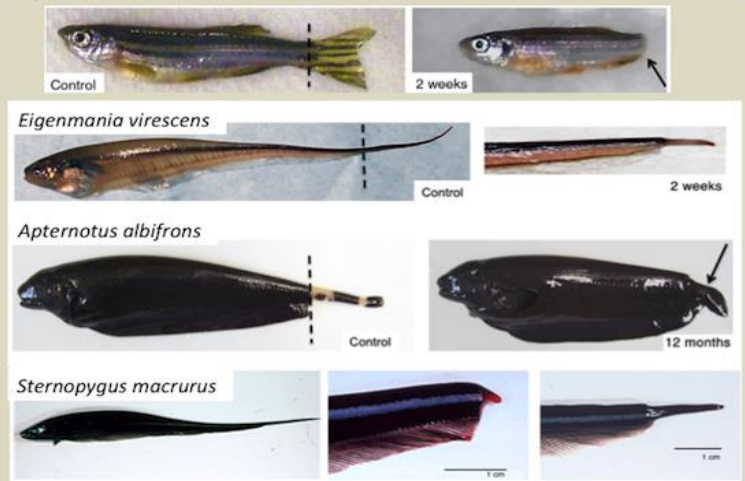


BIOLOGY 309 (3 cr): Guided Biological Research Lab

This course is a discovery-driven training opportunity for all sophomores who have completed Biol 111 and Biol 211 in gaining hands-on experience on how to think about the study of neurobiology, regeneration and behavior using modern experimental techniques.



Regeneration in Zebrafish vs Electric Fishes



Tentatively, the course will be divided into four **cycles**, each lasting three weeks. In each cycle, students will participate in a laboratory **module**. Working in pairs, students will carry out their own research projects and prepare formal presentations to disseminate their results to the Las Cruces community.

This 13.5-week intensive lecture and laboratory course will meet
Monday and Wednesday 1:00 – 4:00 pm.