



## NMSU Student Snapshot Fall 2015

### New Mexico Freshman Applicants Who Did Not Enroll – Where Did They Go?

UNM (832)  
ENMU (205)  
Central NM (145)  
NM Highlands (88)

Texas (125)  
Colorado (105)  
Arizona (86)  
All Other States (165)

Source: National Student Clearinghouse

### Top 5 Majors of Domestic Graduate Students

- Education (MA) (268)
- Social Work (145)
- MBA (141)
- Educational Leadership (117)
- Curriculum & Instruction (95)

### Top 5 Majors of International Graduate Students

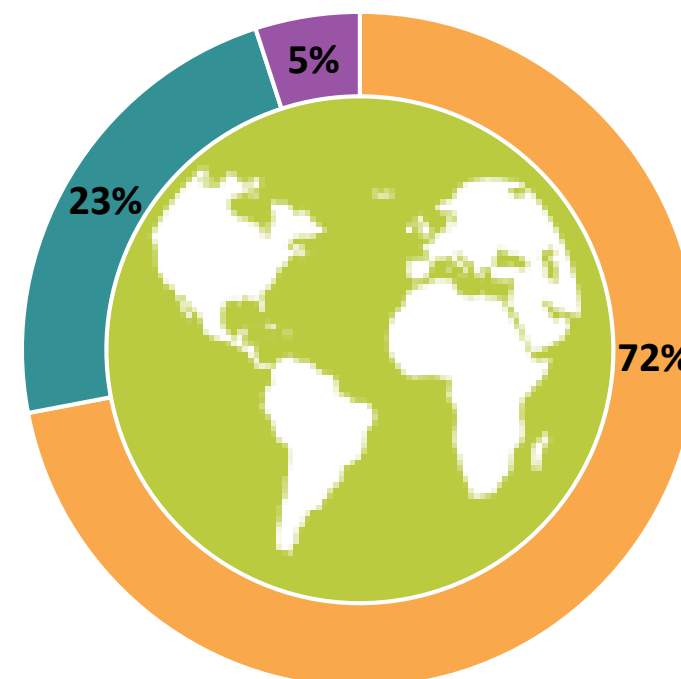
- Engineering (Ph.D.) (97)
- Computer Science (70)
- Electrical Engineering (42)
- Physics (28)
- Math (25)

### Top 5 Majors of Undergraduate Students

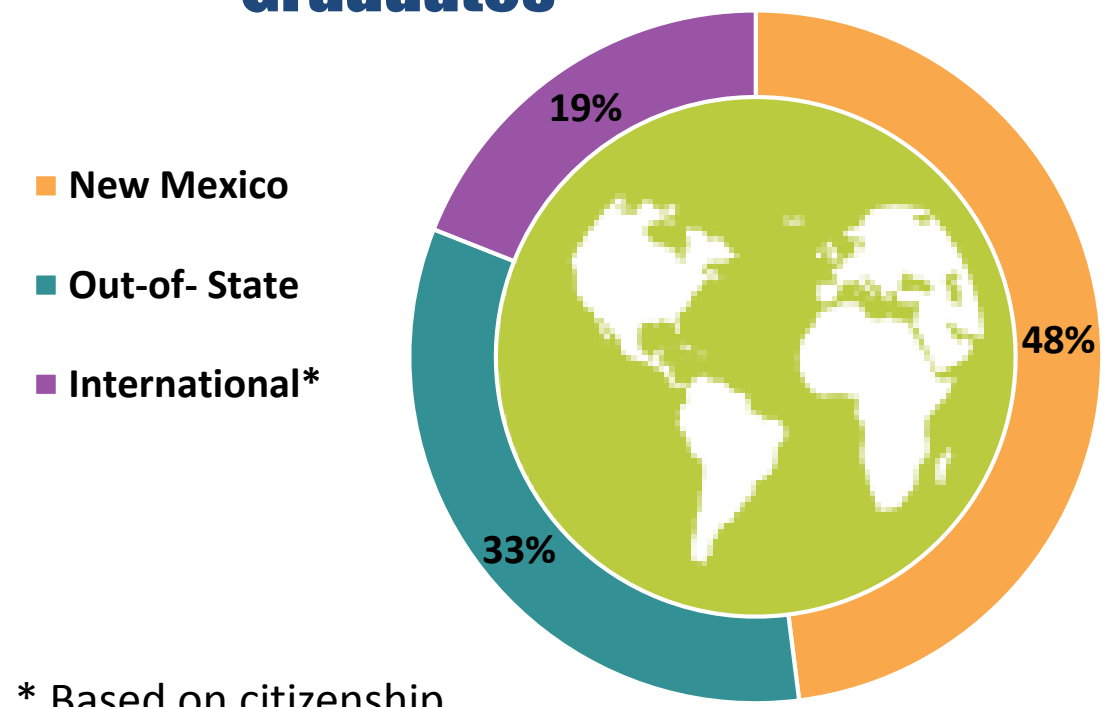
| Domestic Students |                              | International Students |                             |
|-------------------|------------------------------|------------------------|-----------------------------|
| 1                 | Unclassified (766)           | 1                      | Unclassified (246)          |
| 2                 | Criminal Justice (686)       | 2                      | Mechanical Engineering (48) |
| 3                 | Pre-Nursing (766)            | 3                      | Industrial Engineering (46) |
| 4                 | Mechanical Engineering (402) | 4                      | Aerospace Engineering (46)  |
| 5                 | Biology (398)                | 5                      | Finance (27)                |

### Where our students come from:

#### Undergraduates



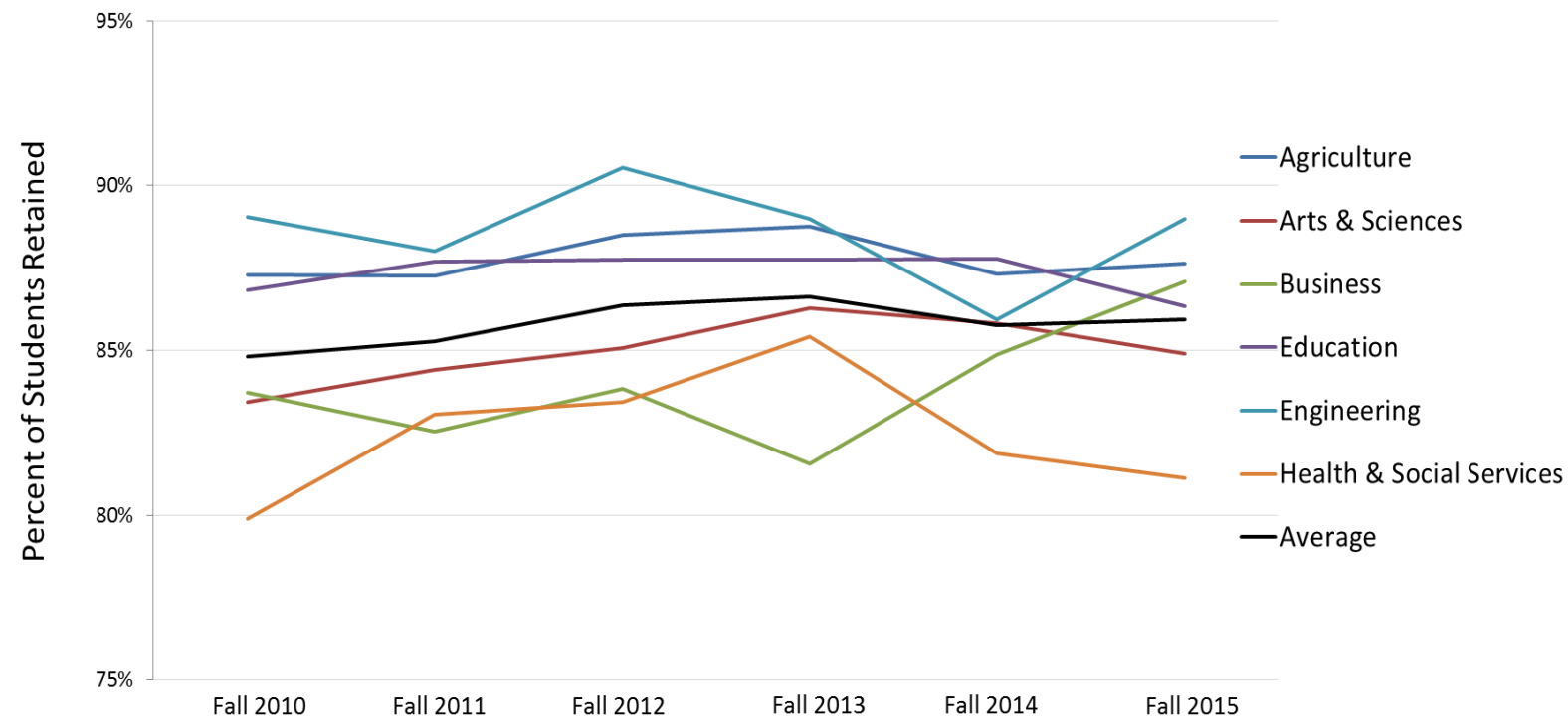
#### Graduates



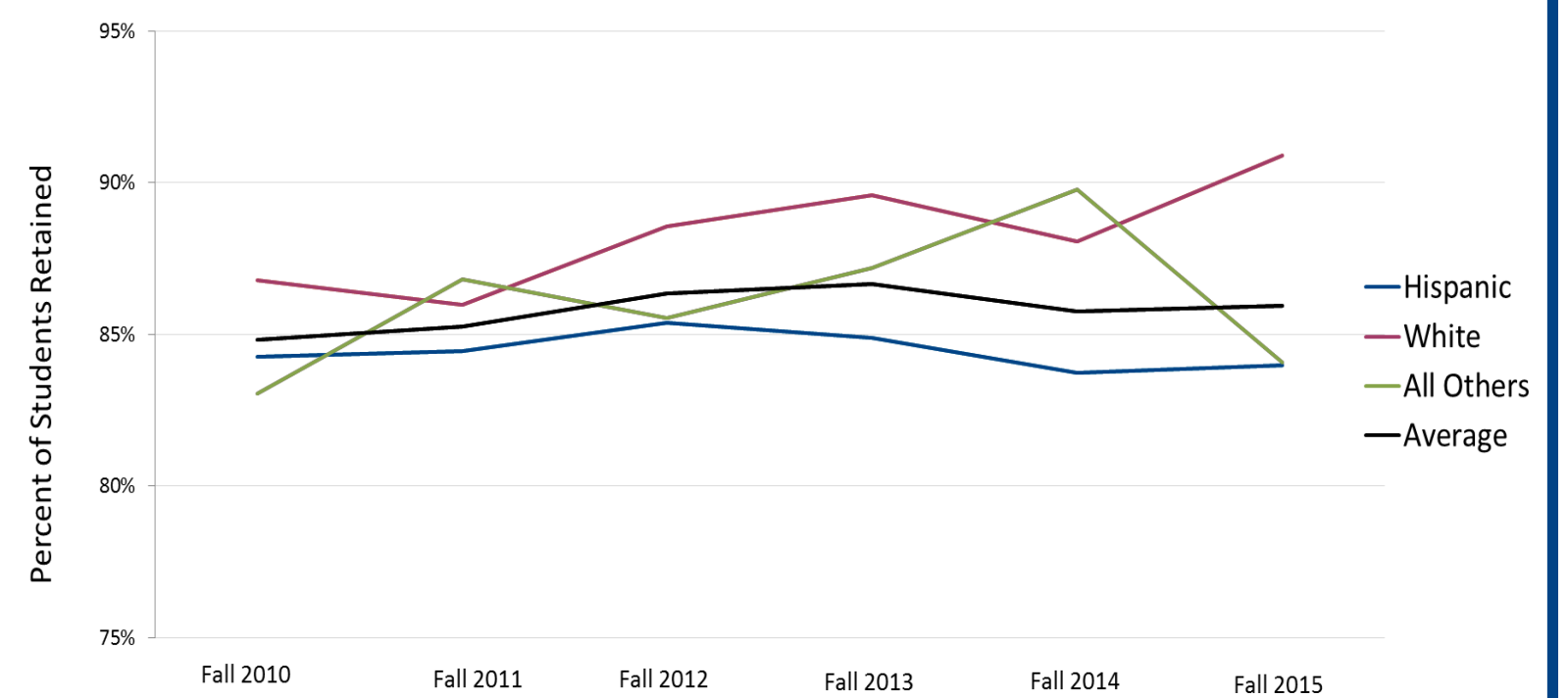
\* Based on citizenship

## First Time Freshmen Retention Rates by Subgroups, Las Cruces Campus

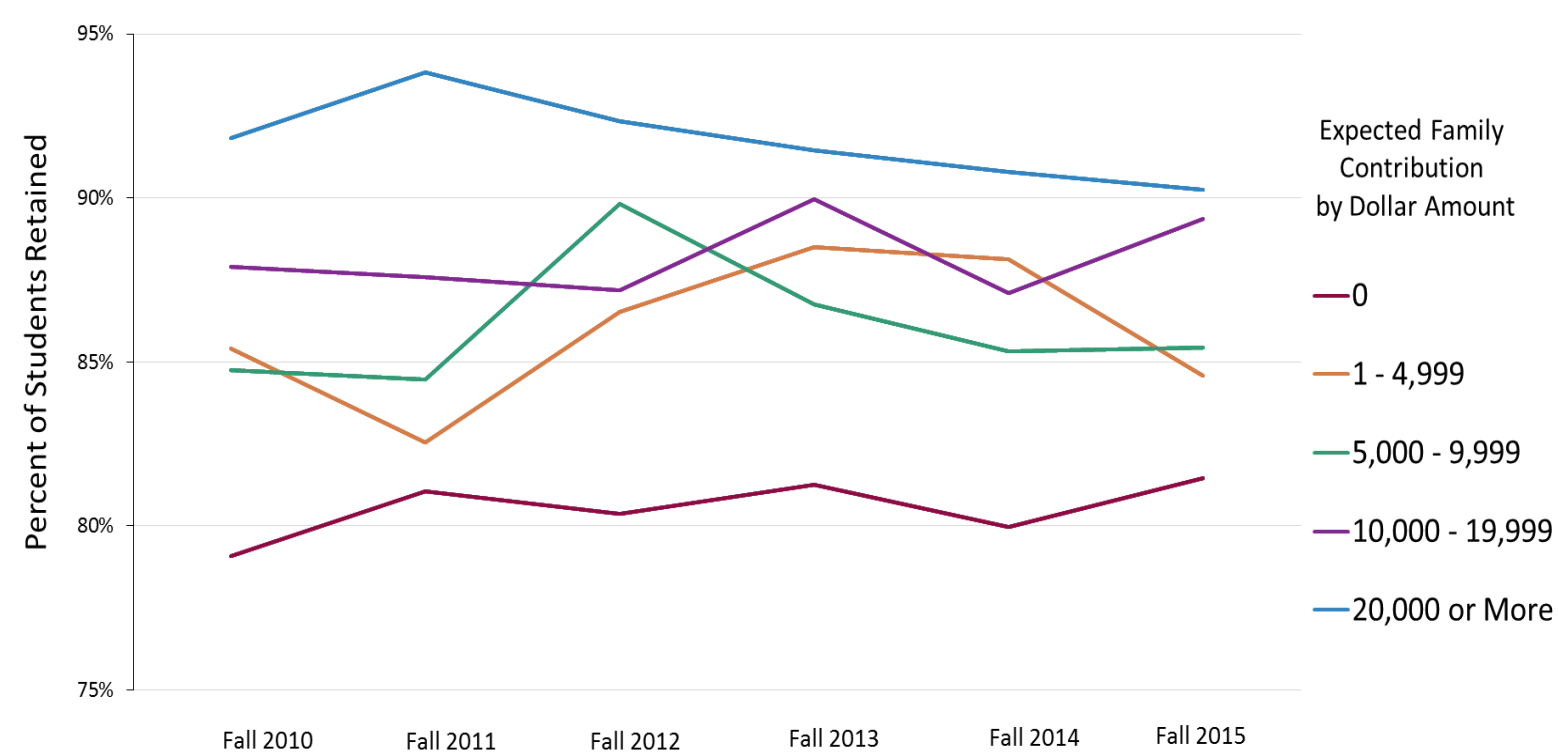
"Freshman" Cohort Fall-to-Spring Retention by College



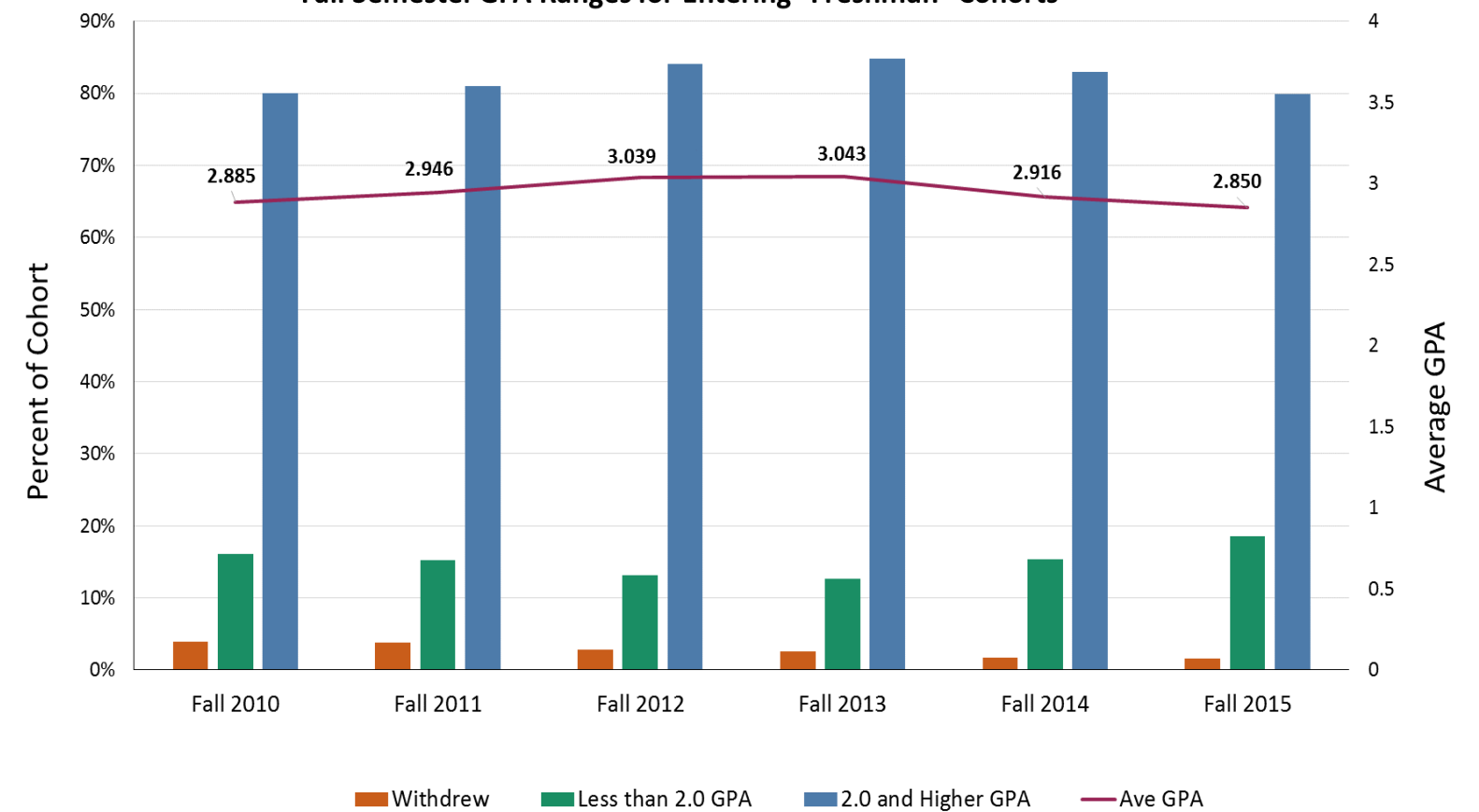
"Freshman" Cohort: Fall-to-Spring Retention by Race/Ethnicity



"Freshman" Cohort: Fall-to-Spring Retention by Family Contribution



Fall Semester GPA Ranges for Entering "Freshman" Cohorts



Note: Scales for the retention rates have been compressed.

Source: NMSU, Office of Institutional Analysis