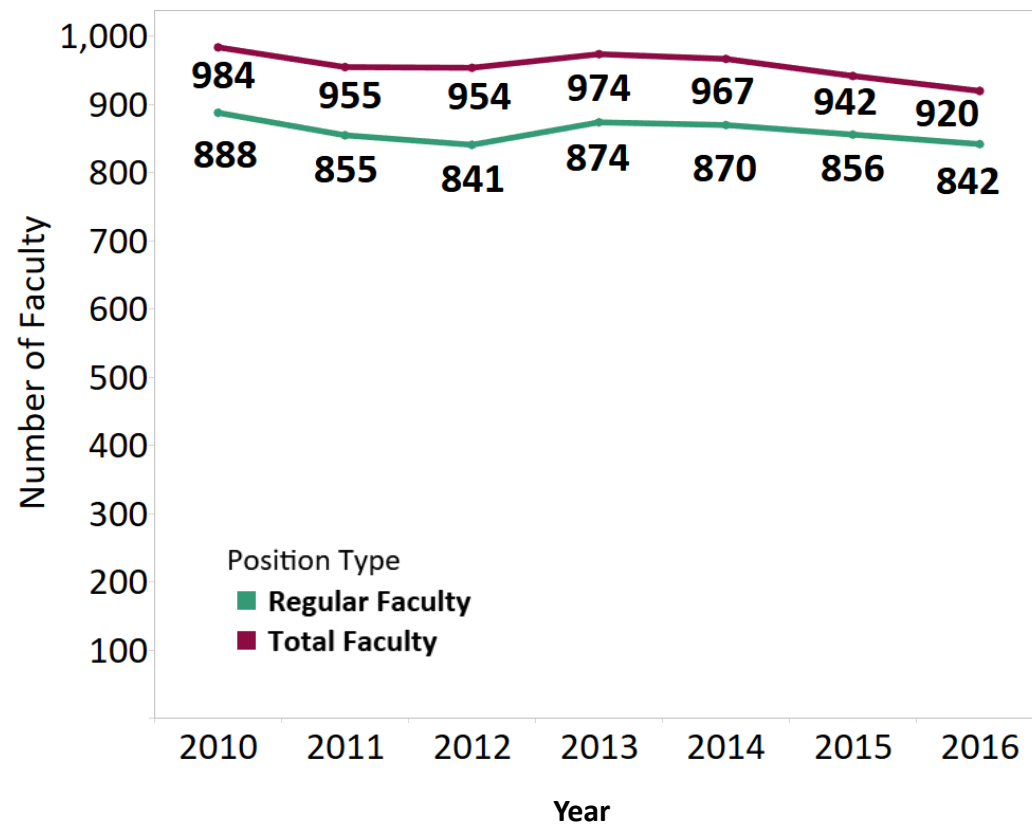
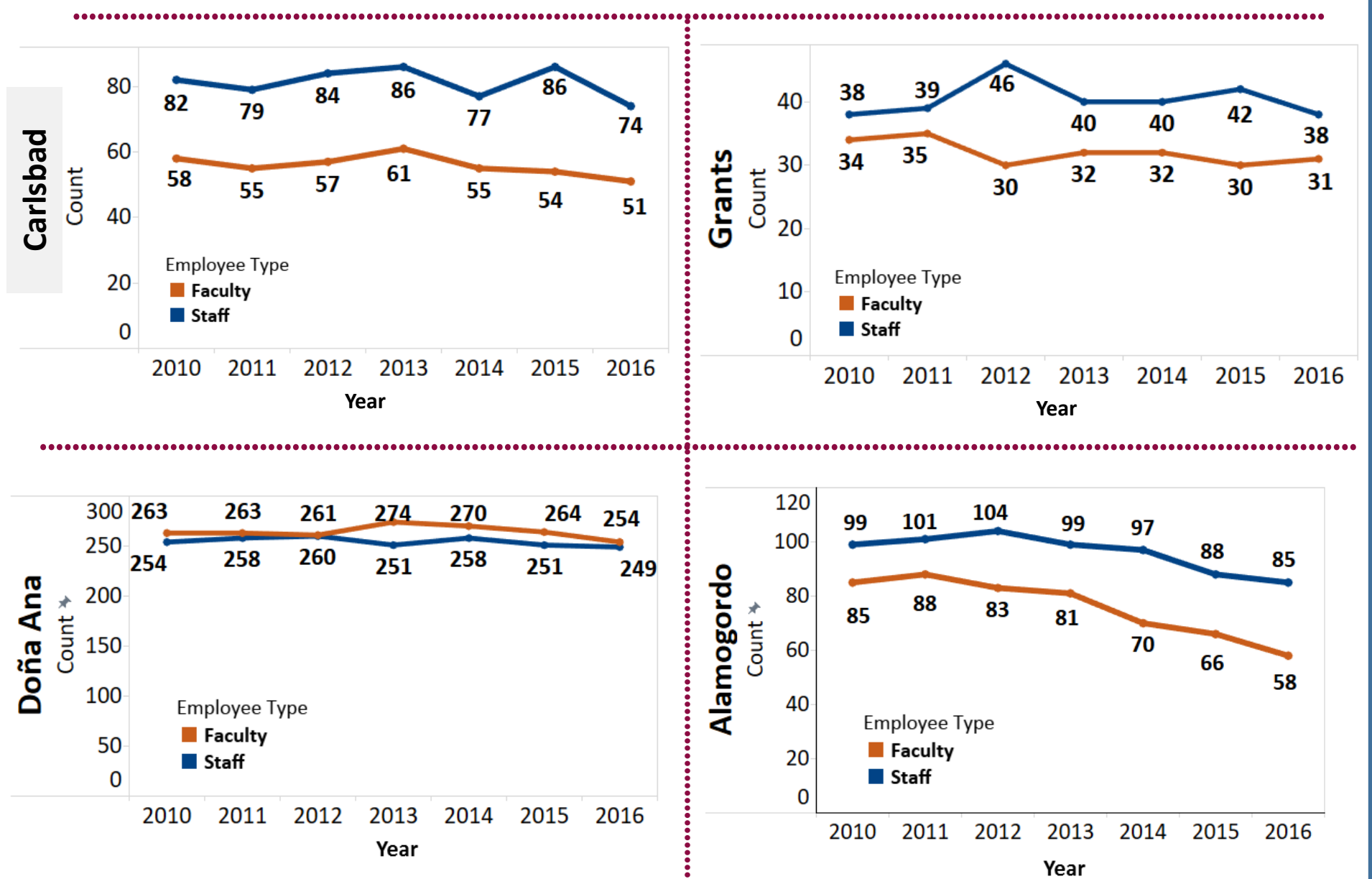


Trends in Faculty and Staff Counts - All NMSU Campuses

Faculty Counts, NMSU Main Campus, Fall 2010-Fall 2016

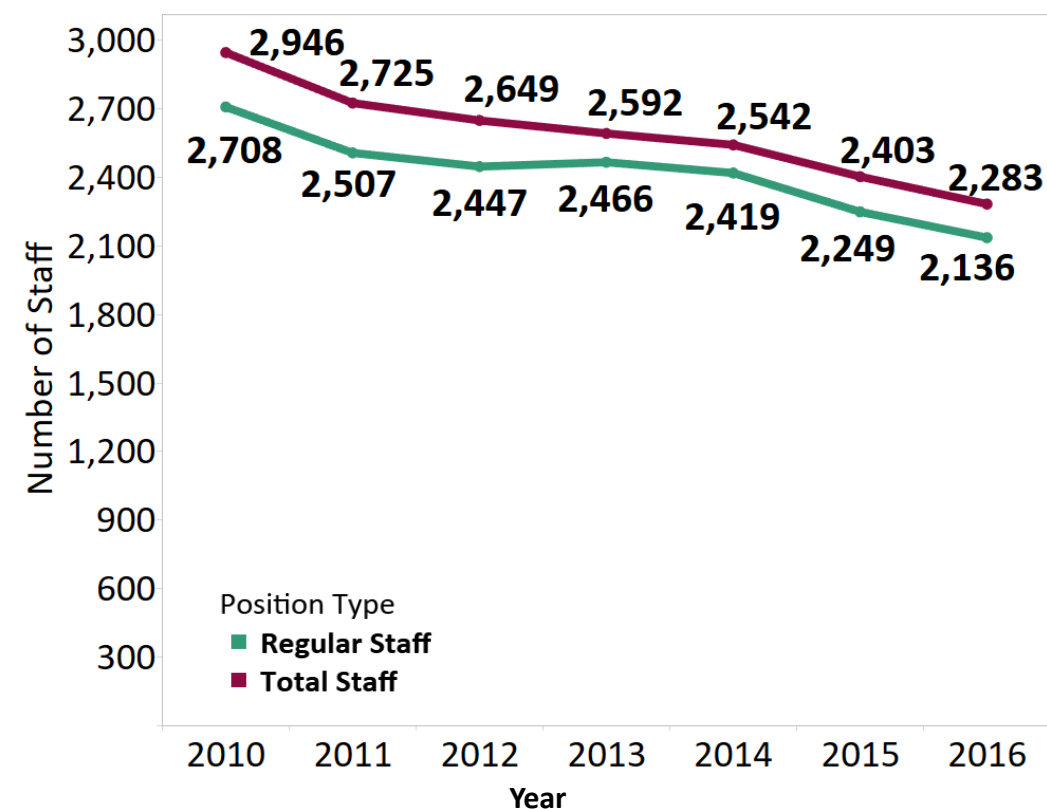


Faculty and Staff Counts by Branch Campus, Fall 2010-Fall 2016

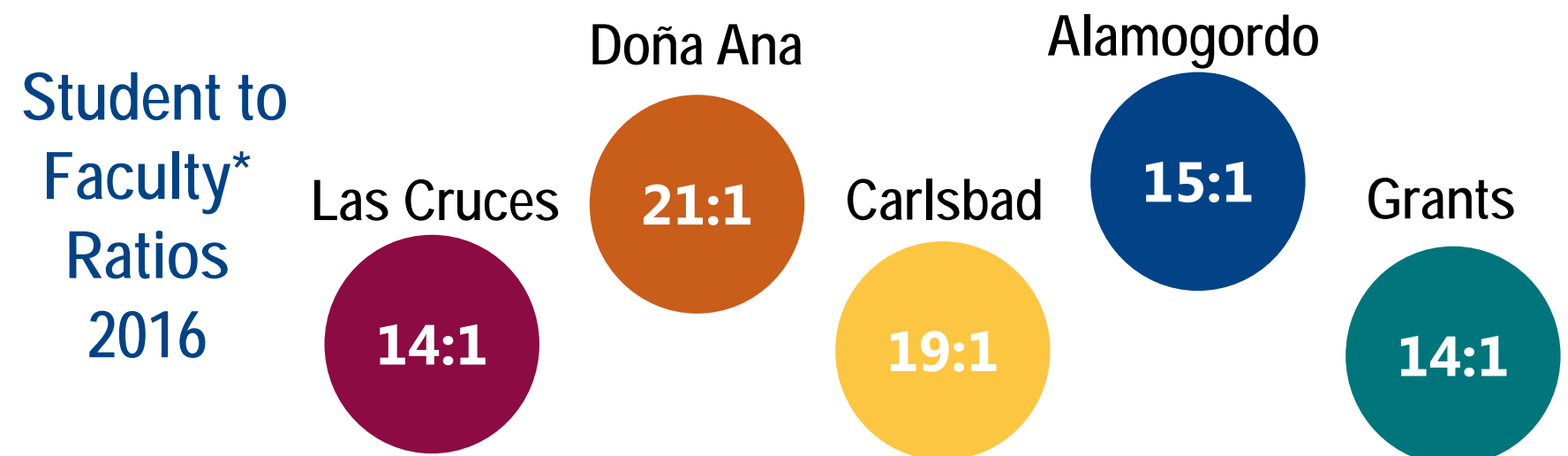


Source: Office of Institutional Analysis, New Mexico State University

Staff Counts, NMSU Main Campus, Fall 2010-Fall 2016



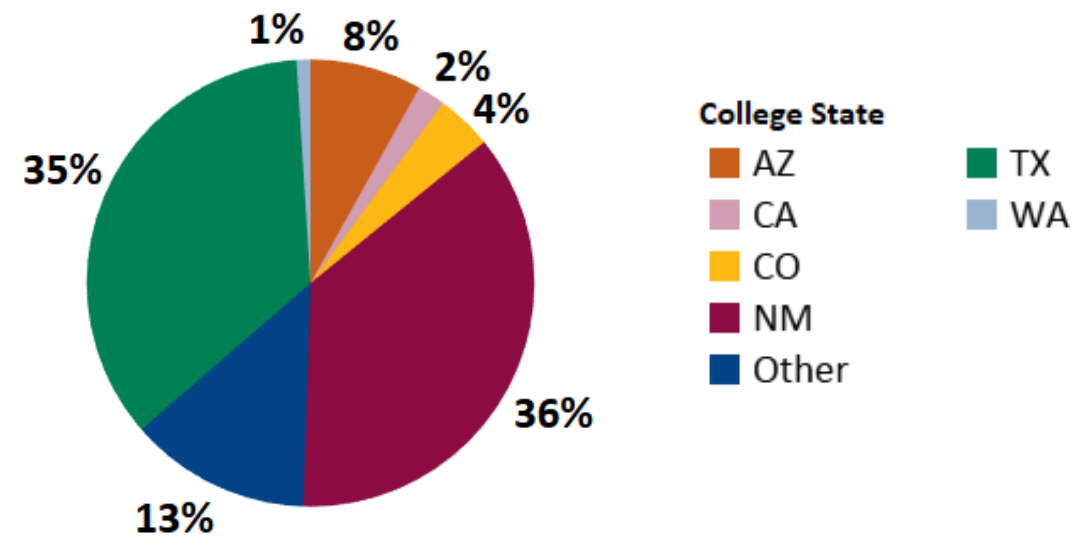
Source: Office of Institutional Analysis, New Mexico State University



Notes: * Ratio calculated on FTE. Student FTE = 1 Full-time + 1/3 Part-time, Faculty FTE = Summed primary FTE of all faculty.

Admitted But Not Enrolled- NMSU First-Time Freshmen 2016

In Which States Did They Enroll?



Students from New Mexico

Where did they enroll in New Mexico?

- UNM 64% (210)**
- Eastern NM 13% (44)
- CNM 7% (24)
- San Juan 5% (16)
- NM Highlands 4% (12)
- Eastern NM- Roswell 2% (7)
- Northern NM 1% (4)
- Western NM .9% (3)

Where They Enrolled Top 20 Colleges

- 452, University of New Mexico 
- 280, University of Texas, El Paso 
- 254, El Paso Community College 
- 75, Central New Mexico Community College 
- 68, Eastern New Mexico University 
- 44, San Juan College 
- 43, University of Arizona 
- 35, Arizona State University 
- 30, Northern Arizona University 
- 30, New Mexico Highlands University 
- 19, Texas Tech University 
- 16, Grand Canyon University 
- 14, Colorado State University 
- 14, Eastern New Mexico University- Roswell 
- 12, West Texas A&M University 
- 11, University of Texas, San Antonio 
- 10, Fort Lewis College 
- 10, Texas A&M University 
- 10, University of Texas, Austin 
- 9, Western New Mexico University 